

REVIEW OF GHG REDUCTIONS FROM MPO SUSTAINABLE COMMUNITIES STRATEGY PLANS

October 13, 2011



California Environmental Protection Agency

 **Air Resources Board**

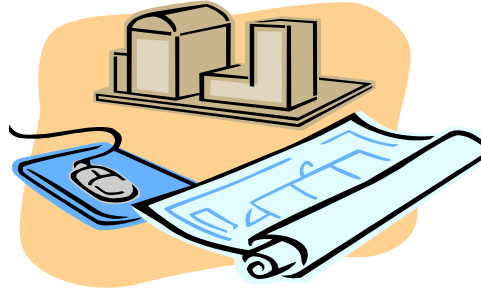
ARB's Role Under the Sustainable Communities Act of 2008

- Set and periodically update GHG targets for 2020 and 2035
- Accept/reject an MPO's determination that its Sustainable Communities Strategy (SCS) would, if implemented, achieve its targets

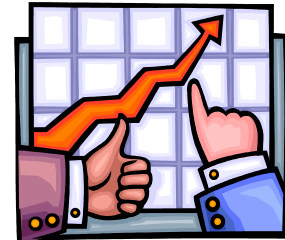
ARB's SCS Evaluation



Data Inputs/
Assumptions



Model



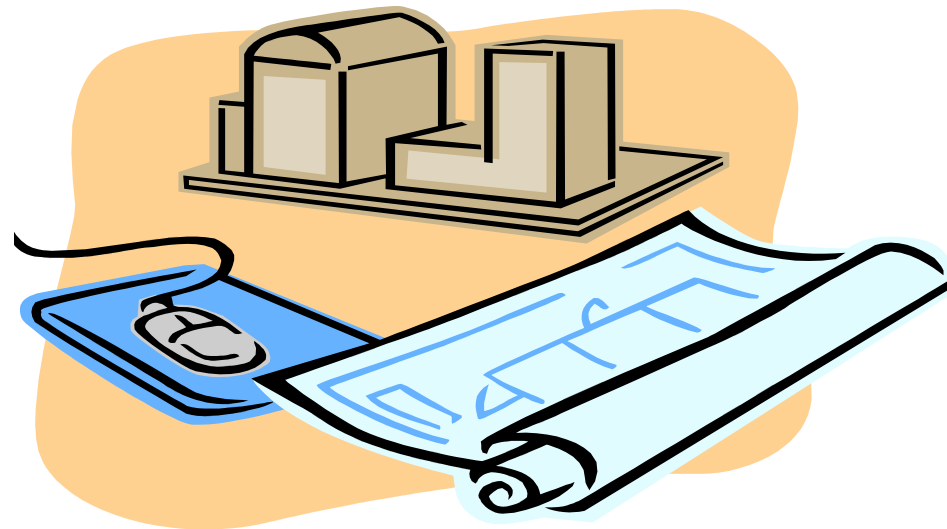
Outputs

MPO Assumptions About Key Variables



Are assumptions reasonable and consistent with other authoritative sources; do they follow the current state of the practice?

Tools Used to Measure Regional Plan Performance



Are the region's modeling tools able to measure how changes in transportation and land use variables affect people's travel?

Predicted Impacts of the SCS Over Time



Do the modeled impacts of the plan provide corroborative, qualitative evidence that the plan could meet its GHG targets?

ARB's Process

- Data Driven
- Collaborative
- Transparent



Valley MPOs Target Discussion in 2012

- Modeling and data improvements
- Scenario development
- Coordination of planning efforts