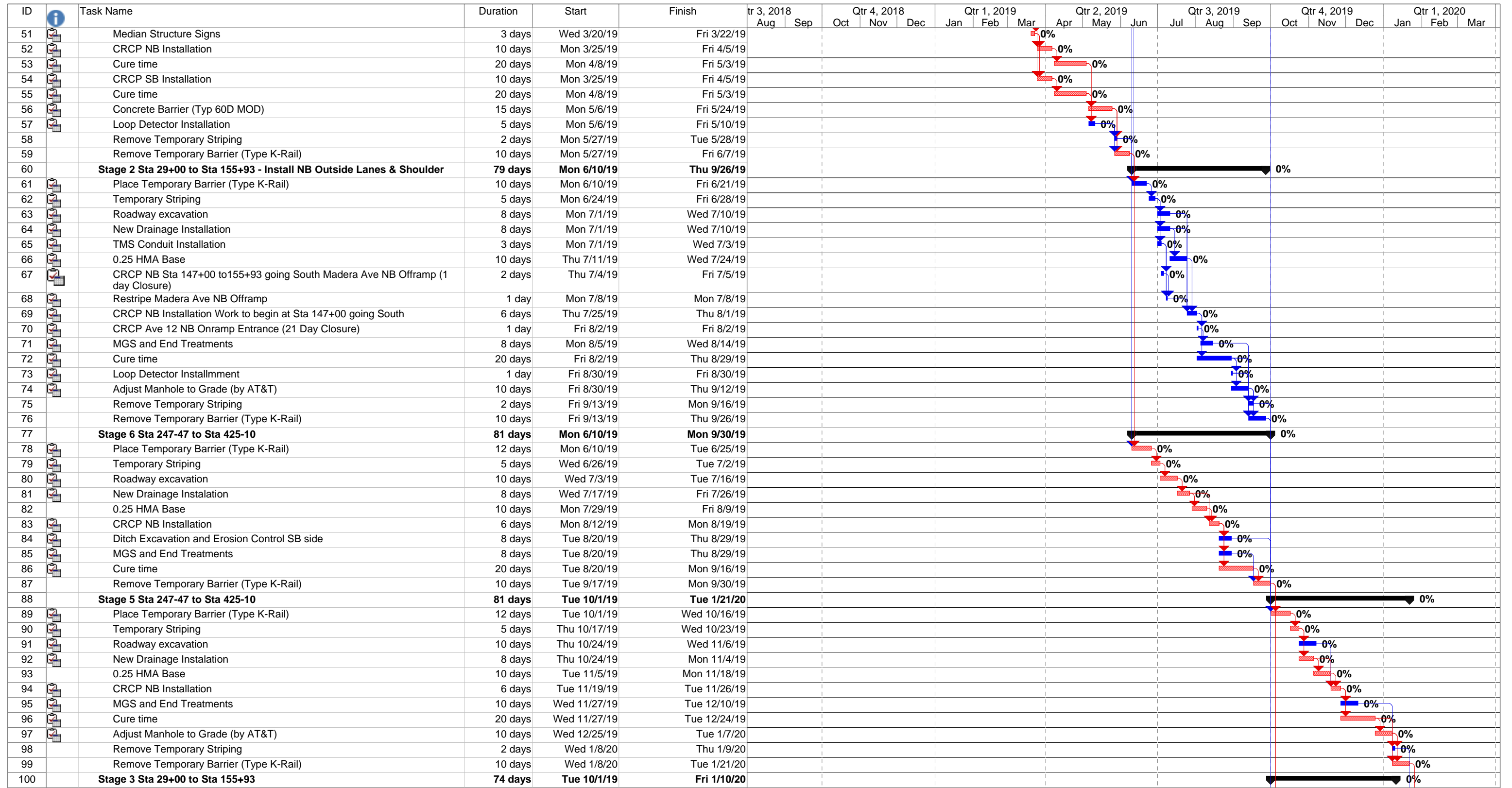


| | | | | | | | | | | |
|---|-------------------|--|--------------------|--|--------------------|--|-----------------------|--|--------------------|--|
| Project: 06-47090-CPMA.xml - Const R Date: Wed 6/20/18 | Critical | | Baseline | | Project Summary | | Duration-only | | External Milestone | |
| | Critical Split | | Baseline Split | | External Tasks | | Manual Summary Rollup | | Deadline | |
| | Critical Progress | | Baseline Milestone | | External Milestone | | Manual Summary | | | |
| | Task | | Milestone | | Inactive Milestone | | Start-only | | | |
| | Split | | Summary Progress | | Inactive Summary | | Finish-only | | | |
| | Task Progress | | Summary | | Manual Task | | External Tasks | | | |



Project: 06-47090-CPMA.xml - Const R
Date: Wed 6/20/18

| | | | | | | | | | |
|-------------------|--|--------------------|--|--------------------|--|-----------------------|--|--------------------|--|
| Critical | | Baseline | | Project Summary | | Duration-only | | External Milestone | |
| Critical Split | | Baseline Split | | External Tasks | | Manual Summary Rollup | | Deadline | |
| Critical Progress | | Baseline Milestone | | External Milestone | | Manual Summary | | | |
| Task | | Milestone | | Inactive Milestone | | Start-only | | | |
| Split | | Summary Progress | | Inactive Summary | | Finish-only | | | |
| Task Progress | | Summary | | Manual Task | | External Tasks | | | |

| ID | Task Name | Duration | Start | Finish | Qtr 3, 2018 | | Qtr 4, 2018 | | | Qtr 1, 2019 | | | Qtr 2, 2019 | | | Qtr 3, 2019 | | | Qtr 4, 2019 | | | Qtr 1, 2020 | | |
|-----|--|----------|--------------|--------------|-------------|-----|-------------|-----|-----|-------------|-----|-----|-------------|-----|-----|-------------|-----|-----|-------------|-----|-----|-------------|-----|-----|
| | | | | | Aug | Sep | Oct | Nov | Dec | Jan | Feb | Mar | Apr | May | Jun | Jul | Aug | Sep | Oct | Nov | Dec | Jan | Feb | Mar |
| 101 | Place Temporary Barrier (Type K-Rail) | 10 days | Tue 10/1/19 | Mon 10/14/19 | | | | | | | | | | | | | | | | | | | | |
| 102 | Temporary Striping | 5 days | Tue 10/15/19 | Mon 10/21/19 | | | | | | | | | | | | | | | | | | | | |
| 103 | Roadway excavation | 10 days | Tue 10/22/19 | Mon 11/4/19 | | | | | | | | | | | | | | | | | | | | |
| 104 | New Drainage Instalation | 10 days | Tue 10/22/19 | Mon 11/4/19 | | | | | | | | | | | | | | | | | | | | |
| 105 | TMS Conduit Installation | 3 days | Tue 10/22/19 | Thu 10/24/19 | | | | | | | | | | | | | | | | | | | | |
| 106 | Temporary Drainage Low and Flat Areas (Ave 12 and Gateway Ave) | 5 days | Tue 10/22/19 | Mon 10/28/19 | | | | | | | | | | | | | | | | | | | | |
| 107 | Almond Ave SB Ramps Constructed | 11 days | Tue 10/22/19 | Tue 11/5/19 | | | | | | | | | | | | | | | | | | | | |
| 108 | Almond Ave Ramp Pavement Striping | 2 days | Wed 11/6/19 | Thu 11/7/19 | | | | | | | | | | | | | | | | | | | | |
| 109 | Basin Excavation | 5 days | Tue 11/5/19 | Mon 11/11/19 | | | | | | | | | | | | | | | | | | | | |
| 110 | Installation of Barrier at Ave 12 SB Offramp | 8 days | Tue 10/22/19 | Thu 10/31/19 | | | | | | | | | | | | | | | | | | | | |
| 111 | Reset Ave 12 Overhead Sign Structure | 8 days | Tue 10/22/19 | Thu 10/31/19 | | | | | | | | | | | | | | | | | | | | |
| 112 | CRCP SB Installation Work to begin at Sta 155+93 going south | 8 days | Tue 11/19/19 | Thu 11/28/19 | | | | | | | | | | | | | | | | | | | | |
| 113 | 0.25 HMA Base | 10 days | Tue 11/5/19 | Mon 11/18/19 | | | | | | | | | | | | | | | | | | | | |
| 114 | MGS and End Treatments | 8 days | Fri 11/29/19 | Tue 12/10/19 | | | | | | | | | | | | | | | | | | | | |
| 115 | SB Ditch Excavation and Erosion Control | 10 days | Fri 11/29/19 | Thu 12/12/19 | | | | | | | | | | | | | | | | | | | | |
| 116 | Barrier Installation | 12 days | Wed 12/11/19 | Thu 12/26/19 | | | | | | | | | | | | | | | | | | | | |
| 117 | Cure time | 20 days | Fri 11/29/19 | Thu 12/26/19 | | | | | | | | | | | | | | | | | | | | |
| 118 | Loop Detector Installation | 1 day | Fri 12/27/19 | Fri 12/27/19 | | | | | | | | | | | | | | | | | | | | |
| 119 | Remove Temporary Striping | 2 days | Mon 12/30/19 | Tue 12/31/19 | | | | | | | | | | | | | | | | | | | | |
| 120 | Remove Temporary Barrier (Type K-Rail) | 10 days | Mon 12/30/19 | Fri 1/10/20 | | | | | | | | | | | | | | | | | | | | |
| 121 | Pavement Striping and signing | 10 days | Wed 1/22/20 | Tue 2/4/20 | | | | | | | | | | | | | | | | | | | | |
| 122 | Remove construction area signs | 6 days | Wed 2/5/20 | Wed 2/12/20 | | | | | | | | | | | | | | | | | | | | |
| 123 | Construction complete | 0 days | Wed 2/12/20 | Wed 2/12/20 | | | | | | | | | | | | | | | | | | | | |

| | | | | | | | | | | |
|---|-------------------|--|--------------------|--|--------------------|--|-----------------------|--|--------------------|--|
| Project: 06-47090-CPMA.xml - Const R Date: Wed 6/20/18 | Critical | | Baseline | | Project Summary | | Duration-only | | External Milestone | |
| | Critical Split | | Baseline Split | | External Tasks | | Manual Summary Rollup | | Deadline | |
| | Critical Progress | | Baseline Milestone | | External Milestone | | Manual Summary | | | |
| | Task | | Milestone | | Inactive Milestone | | Start-only | | | |
| | Split | | Summary Progress | | Inactive Summary | | Finish-only | | | |
| | Task Progress | | Summary | | Manual Task | | External Tasks | | | |