

Measure T Projects Update

October 5, 2021



Measure T (County Regional Projects):

Road 23 Bridge Replacement

Road 30 Improvements (north of Avenue 12)

Avenue 26 Rehabilitation

Road 200 Phase 3 Bridge

Avenue 7 Rehabilitation (west of SR 99)

Measure T (General Road Maintenance):

Pothole patching, shouldering, drainage maintenance

Supplement road maintenance funds

Measure T (Road Maintenance Districts):

Various treatments (overlays, seals, etc.)

Matched with MD funds

Road 23 Bridge at Dry Creek

- Full bridge replacement
- Approach roadway tie-ins
- Total Cost: \$3.1M
 - Federal Highway Bridge Program: \$2.7M (87%)
 - Measure T: \$400K (13%)
- **Opened to traffic April 2021**



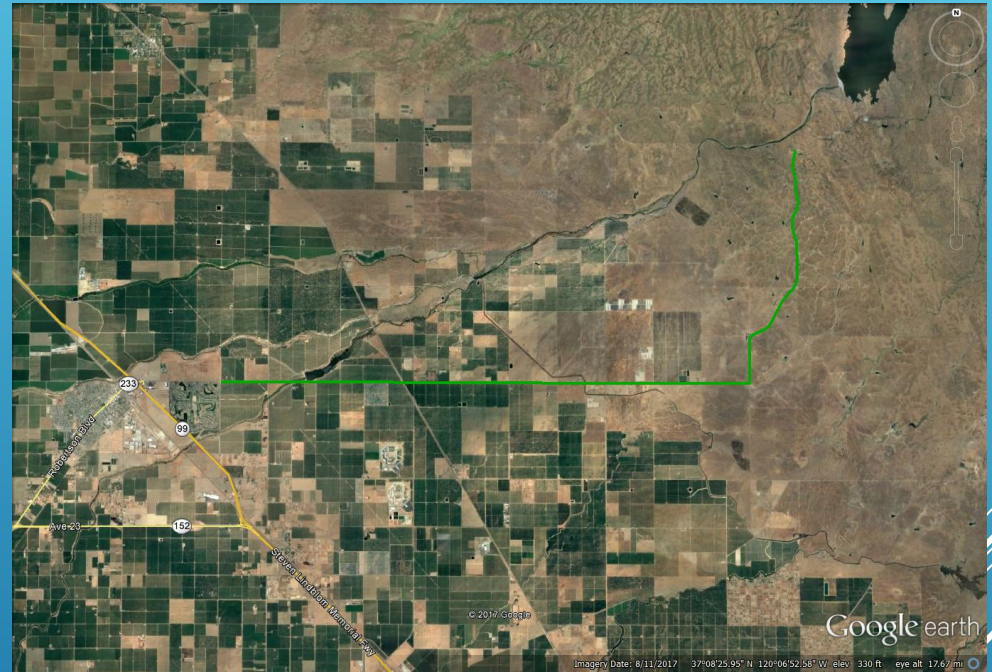
Road 30 Improvements (north of Avenue 12)

- Road rehabilitation including bike and pedestrian facilities
- Eliminated dirt shoulder being used for parking (air quality improvement)
- Total Cost: \$266K
 - Federal Congestion Mitigation Air Quality: \$142K (54%)
 - SB-1 Local Partnership Program (Formula): \$62K (23%)
 - Measure T: \$62K (23%)
- **Opened to traffic April 2021**



Avenue 26/Road 29 Rehabilitation

- 16 miles of road rehabilitation
- Avenue 26 from Chowchilla City Limit to Road 29; Road 29 from Avenue 26 to Eastman Lake entrance
- Project Cost Estimate: \$24.8M
 - Federal Land Access Program (FLAP): \$22M (88.7%)
 - Measure T: \$2.8M (11.3%)
- **UPDATE (per FHWA Project Manager):**
 - Advertise for bids end of September 2021**
 - Award contract by Mid-November 2021**
 - Construction in Spring 2022**



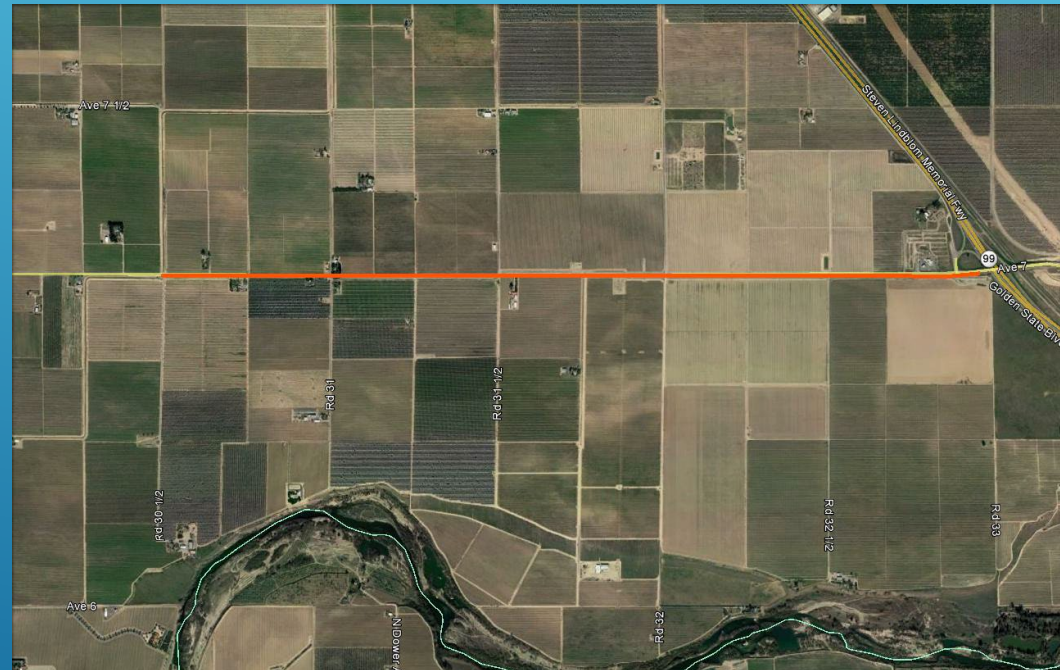
Road 200 Phase 3 Bridge

- Project design is complete
- Project permits are being extended
- Project cost estimate (updated): \$9.8M
- MCTC Regional \$'s programmed for 2023
- County has been banking local agency regional Measure T funds to supplement MCTC Regional \$'s for construction (currently \$4M banked)



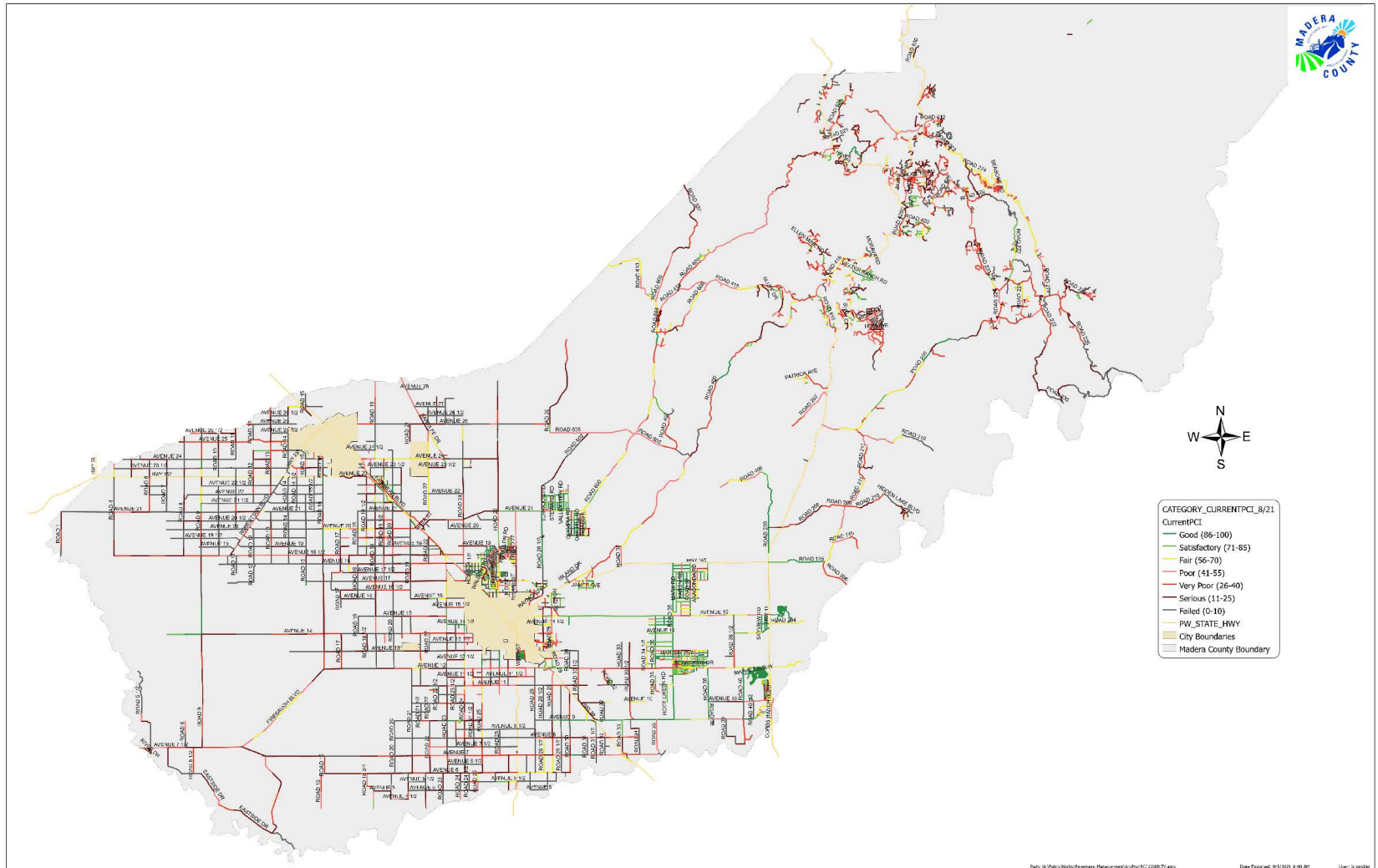
Avenue 7 Rehabilitation (west of SR 99)

- 2 miles of road rehabilitation (SR 99 to Road 30-1/2)
- Full depth reclamation and wearing surface
- Project Cost Estimate: \$2.1M:
 - SB-1 Local Partnership Program: \$340K
 - Measure T: \$1.76M
- **In-design; anticipate construction in Spring 2022**
(grouped with SB-1 projects for cost savings benefit)



Pavement Management System

- Continual evaluation and update of database of all county road conditions (1,503 county-maintained miles)



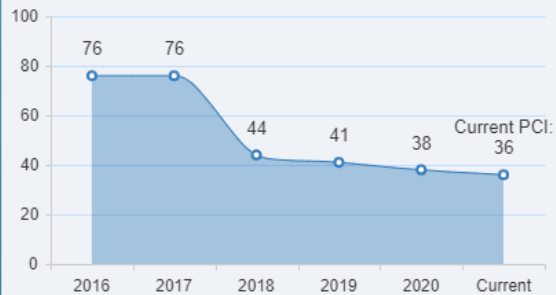
Pavement Management System

- Continual evaluation and update of database of all county road conditions (1,503 county-maintained miles)

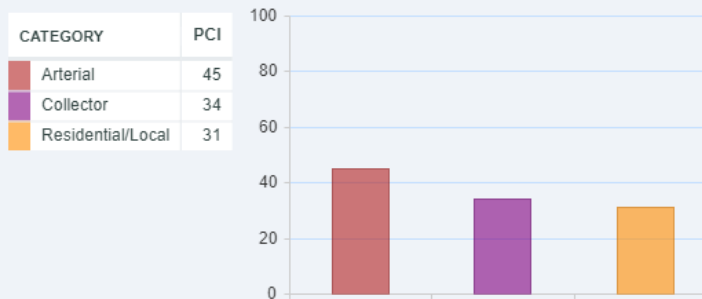
Executive Dashboard

Pavement Area (square miles): 5.93 | Centerline Miles: 1503.55 | Lane Miles: 2985.16 | Sections: 3195

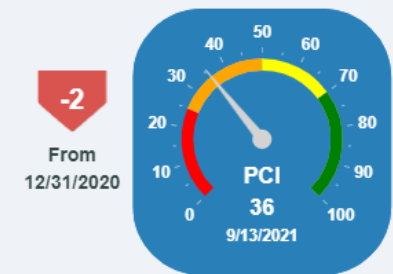
Historical Pavement Condition Trends



Current PCI by: Functional Class

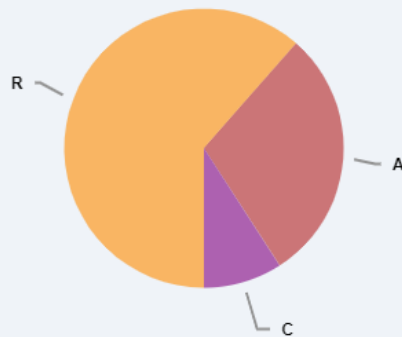


*Current PCI



Percent of Area by: Functional Class

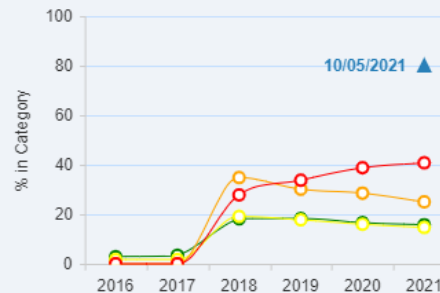
Show Legend



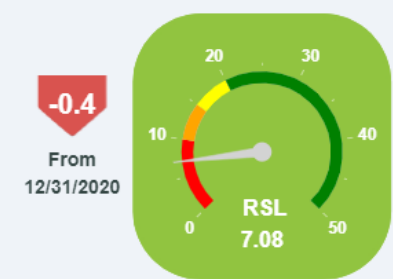
Historical Network Condition Trends

As of 12/31/2020

| | | |
|-----------|-----|----|
| Very Good | 17% | 0 |
| Good | 15% | -1 |
| Poor | 26% | -3 |
| Very Poor | 42% | 3 |

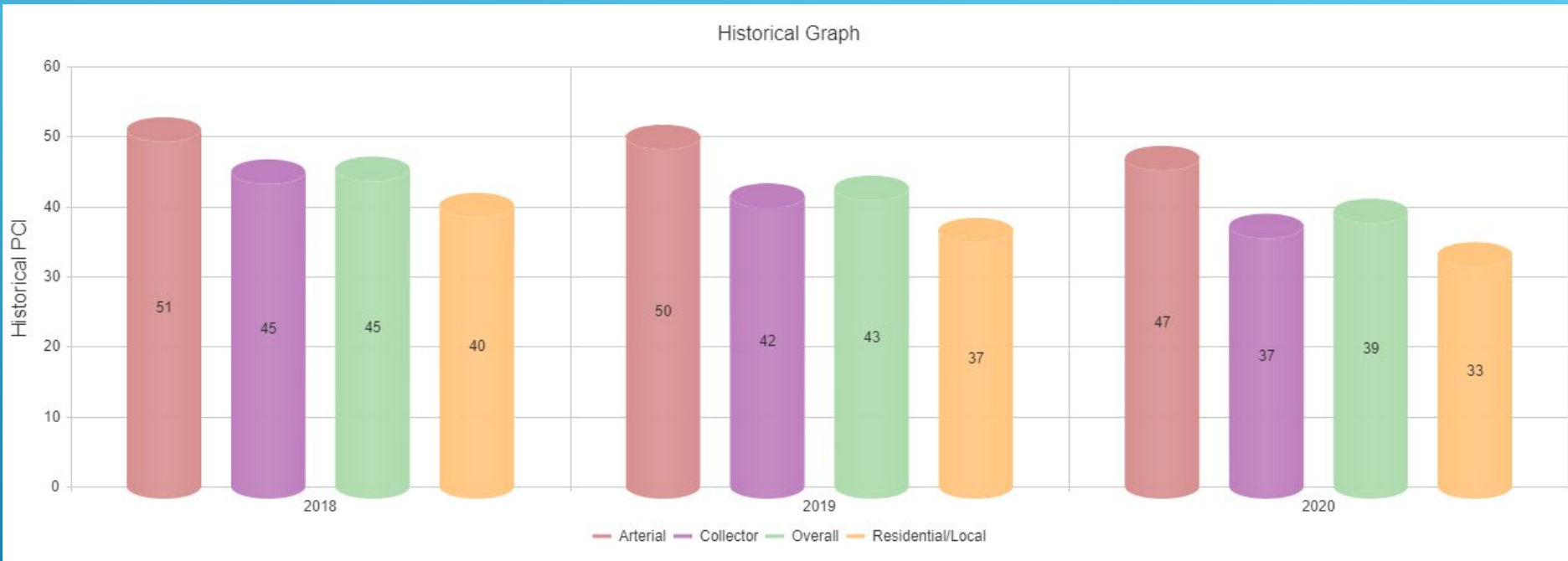


Remaining Service Life (years)



DISCLAIMER: For display purposes only, graphs with an asterisk () show Condition Category colors based on default PCI Breakpoint values of 75, 50 and 25. Please Note: Historical PCI values are calculated as of 12/31 of the year shown.

Pavement Management System





CONTACT PUBLIC WORKS
(559) 675-7811

Questions?